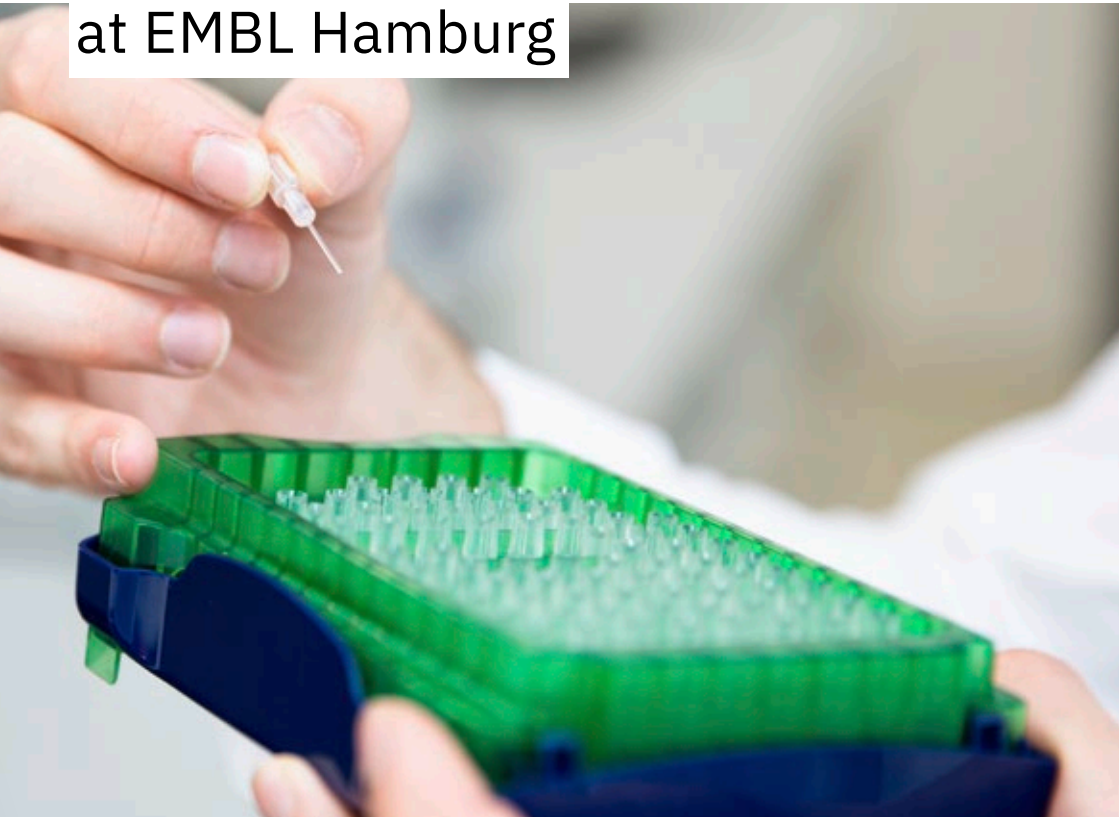


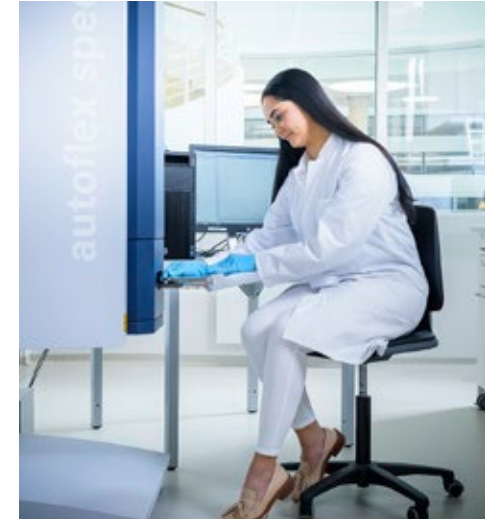
INDUSTRY SERVICES

Sample Preparation and Characterisation Core Facility at EMBL Hamburg



The Sample Preparation and Characterisation (SPC) Core Facility at EMBL Hamburg provides optimum conditions and support for performing biophysical characterisation experiments, including sample preparation for experiments at EMBL beamlines, cutting-edge technologies to measure interactions and to precisely determine the stability, shape and size of different biomolecules and biomolecular assemblies.

Our services



Experimental design, measurements, and data analysis

We can recommend the most suitable biophysical techniques to answer the specific biological questions being investigated.

Experiments are custom designed to meet the needs of individual users, with all measurements performed by our highly skilled staff. Users will receive a final report with the analysed data.

Each step is performed in consultation with the user, who can choose between individual blocks or the full package.

Optional access to our equipment

We provide access to equipment for experienced biophysics users who wish to carry out their experiments themselves. Of course, an experienced member of our team will be there to provide the necessary technical support during experiments.

Initial protein quality control

- Determination of purity
- Protein identification and intact mass determination
- Analysis of monodispersity
- Sample optimization and screening of suitable conditions followed by nanoDSF and DLS

Protein secondary structure determination and temperature stability by infrared and circular dichroism spectroscopy

- FT-IR spectrometer: for soluble proteins and coated nanoparticles
- Far- and near-UV CD analysis

Molecular modelling

Molecular dynamics simulations and analysis of trajectories to investigate structural dynamics of proteins.

Available biophysical techniques

- Isothermal Titration Calorimetry
- Mass spectroscopy
- Circular dichroism
- Differential scanning fluorimetry using fluorescence
- Microscale thermophoresis using label and label free technology
- Dynamic / static light scattering
- Infrared spectroscopy
- Surface plasmon resonance
- Biolayer interferometry
- Time-resolved experiments



In partnership with:



Contact us and we will help you find a solution specifically tailored to your needs!

Phone

+49-8998-87566

Email

spc@embl-hamburg.de

Address

EMBL Hamburg (c/o DESY)
Centre for Structural Systems Biology (CSSB)
Sample Preparation and Characterisation (SPC) Core Facility
Notkestrasse 85,
22607 Hamburg, Germany

Website

www.embl-hamburg.de/services/spc

Industrial Services in Sample Preparation
and Characterisation Integrated Core Facility
in Structural Biology

Image credits: Kinga Lubowiecka/EMBL and Jörg Müller