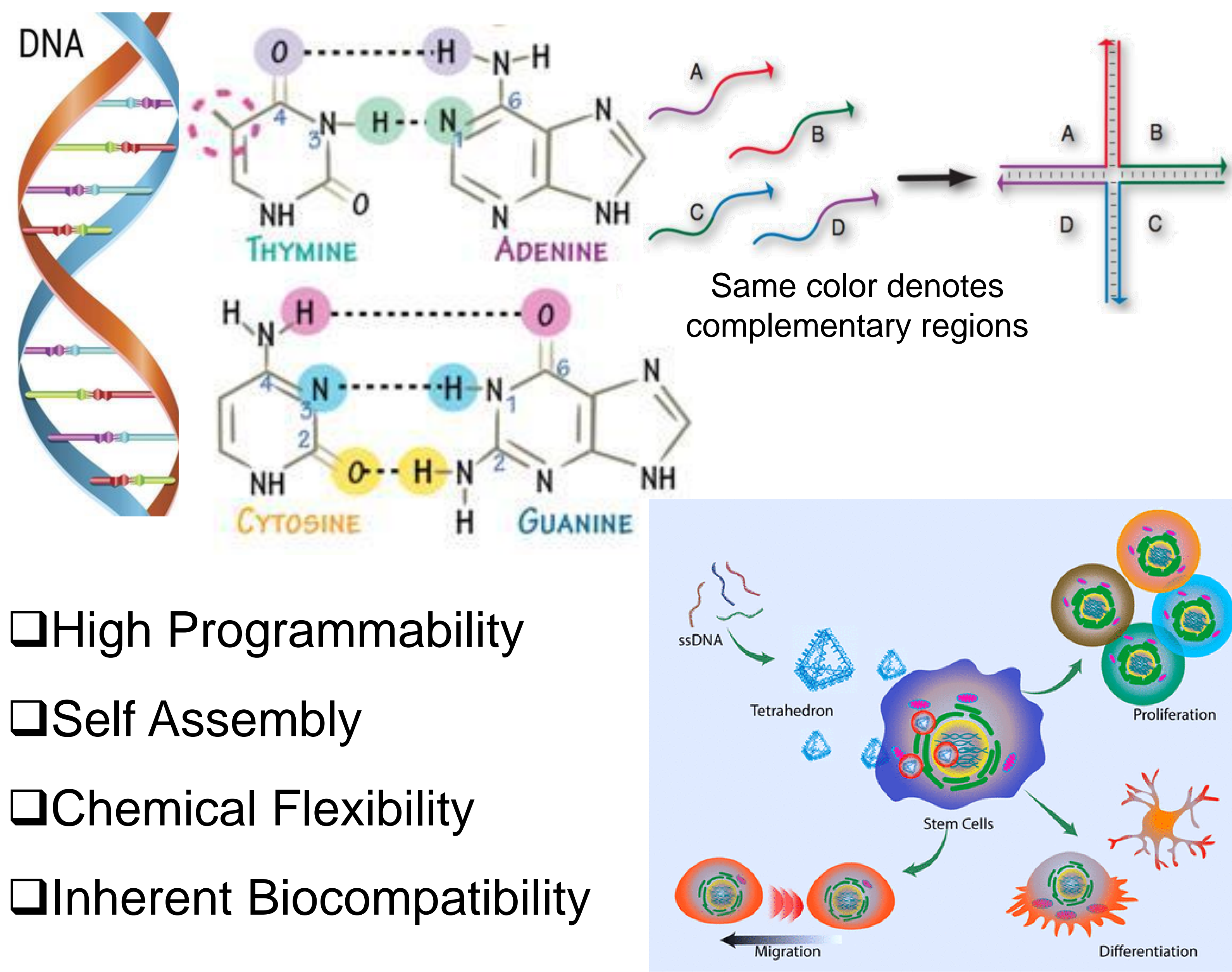


# Geometry of self-assembled DNA nanostructures influences in-vitro angiogenesis in HUVECs

Anjali Rajwar<sup>1</sup>, Payal Vaswani<sup>1</sup>, Dhiraj Bhatia<sup>\*1</sup>.

<sup>1</sup> Biological Engineering, Indian Institute of Technology Gandhinagar, Palaj, Gandhinagar, Gujarat 382355, India

## INTRODUCTION

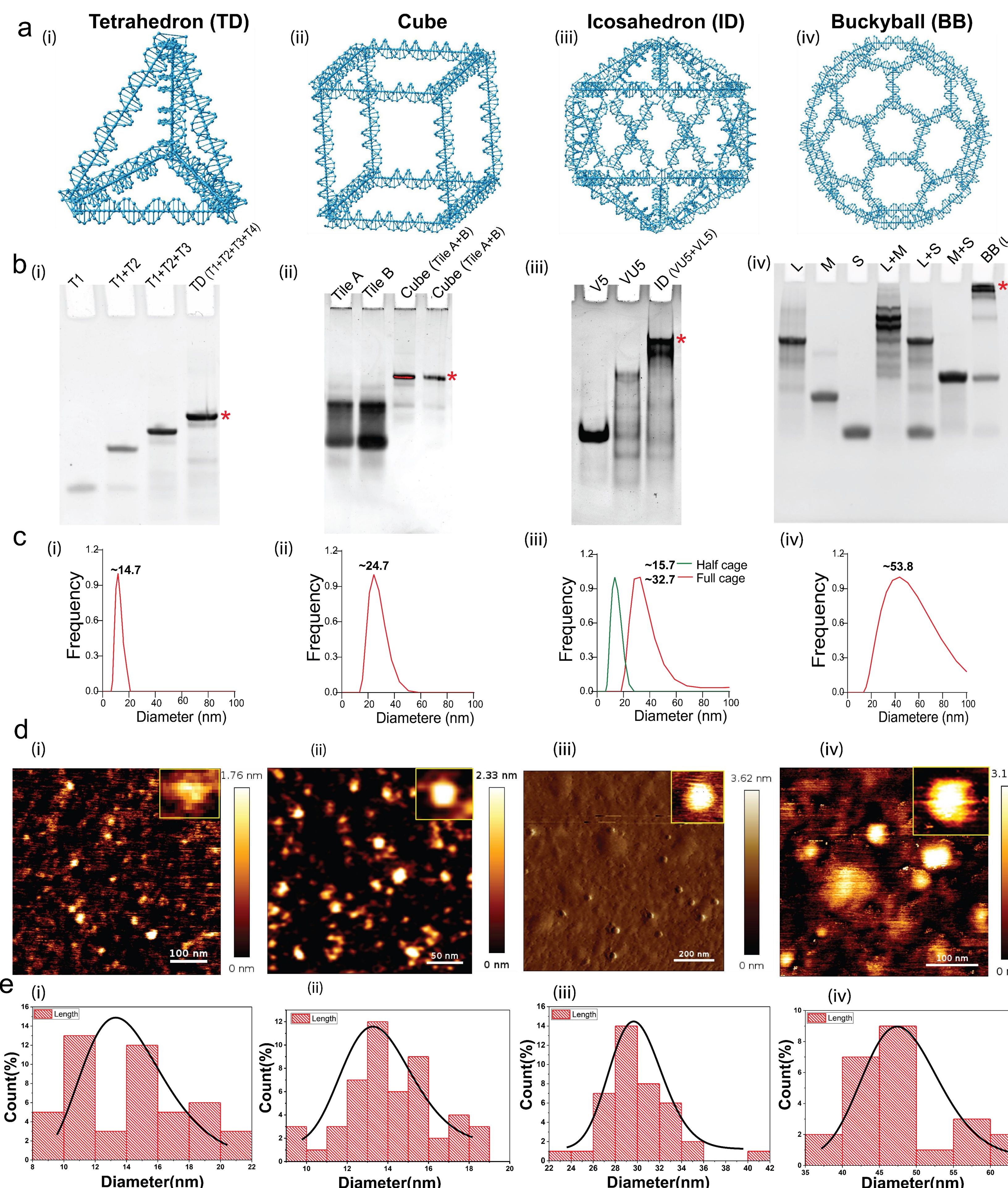


- High Programmability
- Self Assembly
- Chemical Flexibility
- Inherent Biocompatibility

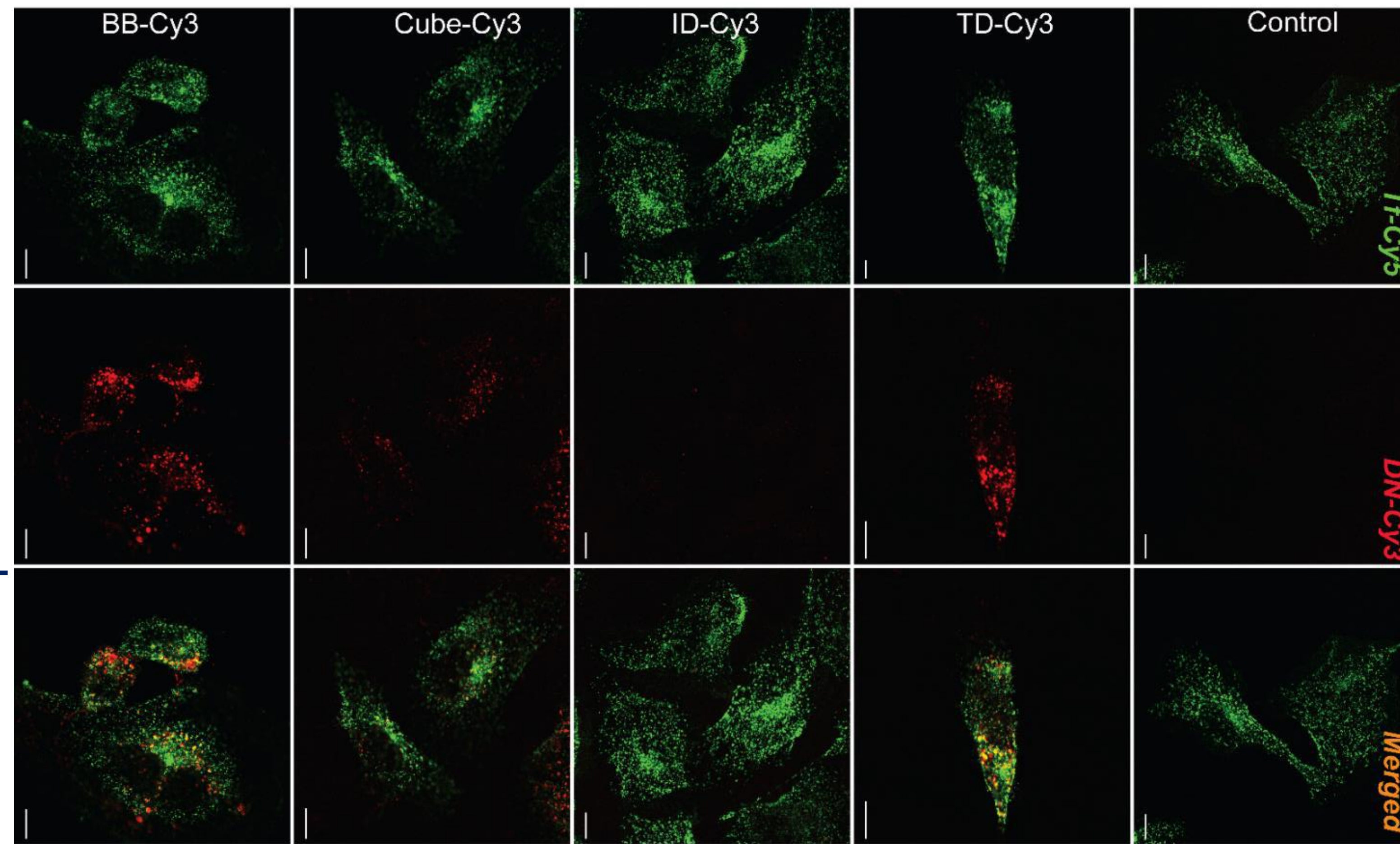
## AIM

How geometrical parameters of DNA nanostructures influences the differentiation of HUVECs?

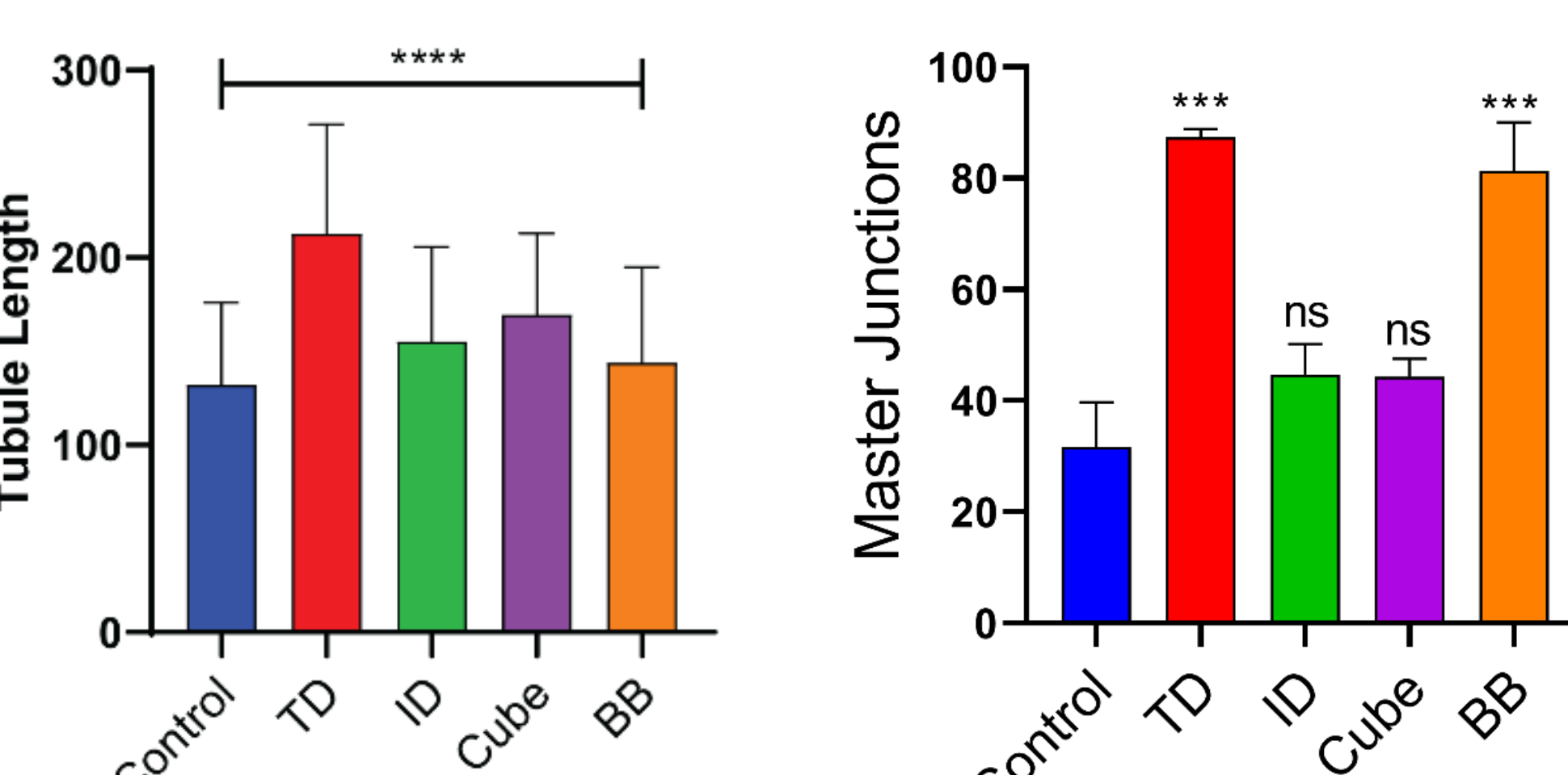
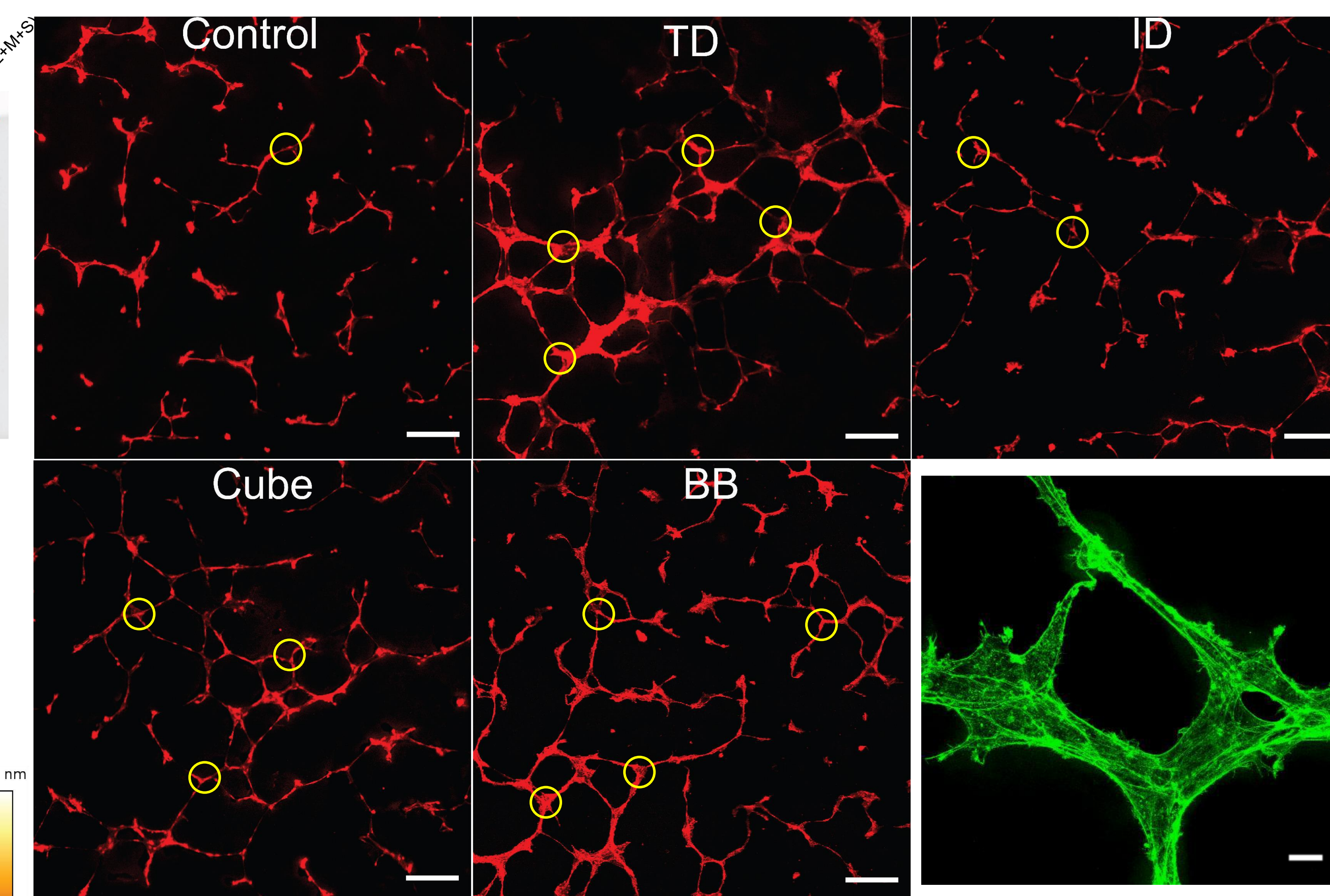
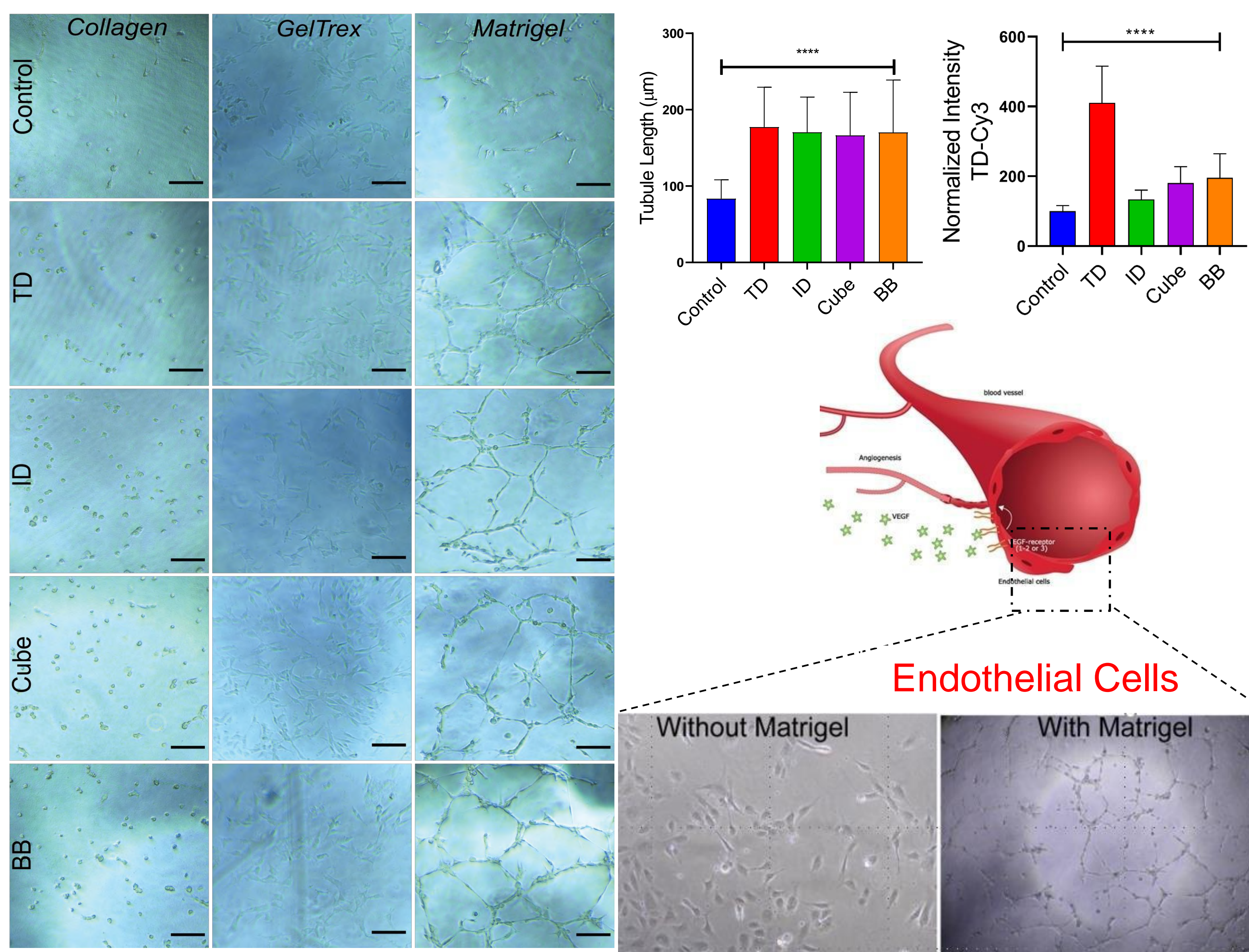
### Materials and Methods



### Cellular uptake of DNAs in HUVECs



### Effect of Matrix in HUVEC differentiation



**Anjali Rajwar**  
PhD Student,  
Biological Engineering  
IIT Gandhinagar,  
E-mail:  
[anjali.rajwar@iitgn.ac.in](mailto:anjali.rajwar@iitgn.ac.in),  
[dhiraj.bhatia@iitgn.ac.in](mailto:dhiraj.bhatia@iitgn.ac.in)

+91-7574040308

### References

1. Rajwar, A. ; et al., *bioRxiv* **2021**, 2021.10.19.465062. 2 Rajwar, A.; et al., *ACS Appl. Bio Mater.* **2020**, 3 (11), 7265–7277
3. Goodman, R. P.; et al., *Science* **2005**, 310 (5754), 1661–1665. 4. He, Y.; et al., *Nature* **2008**, 452 (7184), 198–201