

How EMBL supports you



Alumna Claudia Blass bears the EMBL running t-shirt at Aletsch Half Marathon in Switzerland. *Image courtesy of Claudia Blass*

Learn about the valuable resources available to EMBL alumni and staff, and the whole global life sciences community. EMBL supports your research, career development, and professional success with access to its networks and expertise, training, facilities, services, and travel grants.

Resources at EMBL

EMBL courses and conferences

- Browse our rich calendar of courses and conferences: embl.de/training/events
- Learn from and network with outstanding experts and leaders
- Access EMBL facilities
- Benefit from social programmes and financial assistance

Contact: events@embl.de

Your conferences at EMBL

- Organise your own conference at the EMBL Advanced Training Centre (ATC)
- Receive support from our expert Course and Conference team with your concept, logistics, and sponsorship
- Focus on developing an extraordinary scientific programme for up to 500 participants

Contact: events@embl.de

Your scientific training courses at EMBL

- Create your own bespoke, hands-on, innovative course to suit the needs of your organisation
- Take advantage of access to EMBL resources and expertise at the forefront of science and technology

Contact: events@embl.de (EMBL Heidelberg);
sarahm@ebi.ac.uk (EMBL-EBI)

EMBL Core Facilities

- Access state-of-the-art instruments, technologies, and services designed to enable scientists to achieve ambitious research goals: embl.org/services-facilities
- Receive support from EMBL technology experts focused on delivering high-quality service provision

Contact: Rainer Pepperkok, Director of Scientific Core Facilities and Scientific Services, rainer.pepperkok@embl.org



Euro-BioImaging technologies and services at EMBL

State-of-the-art microscopy equipment and image processing tools made available through Euro-BioImaging: eurobioimaging.eu

- Access Euro-Bioimaging technologies and services at EMBL Heidelberg and Barcelona; open to all regardless of affiliation
- Use advanced microscopy techniques such as FRAP, FRET, FCS, high-throughput microscopy, laser nanosurgery, CLEM, mesoscopy, and super-resolution microscopy
- Explore a range of services including project planning, sample preparation, microscope selection and use, and image processing and visualisation

Contact: eubi-biohub@embl.de

EMBL Scientific Visitor Programme

EMBL welcomes scientists from all over the world to access the Core Facilities and laboratories at its six sites.

- View calls for open sabbaticals: embl.de/training/visitor-programme

Contact: vp@embl.org



EMBL Christian Boulin Fellowships

For access to EMBL Core Facilities

- Apply for financial assistance to use EMBL core facilities, thanks to the EMBL Corporate Partnership Programme (CPP)
- Support of up to €1 500 to cover travel and accommodation costs for scientists visiting facilities at EMBL's six sites
- The Christian Boulin Fellowship helps scientists learn about and use the latest scientific techniques, and connects users with scientists and industry

Contact: boulinfellowship@embl.de

EMBL travel grants and fee waivers

For access to EMBL courses and conferences

- Apply for financial assistance to access EMBL courses and conferences, thanks to the EMBL Corporate Partnership Programme (CPP)
- Available to outstanding scientists from countries developing their scientific programmes
- Recipients are selected by scientists organising EMBL courses and conferences

Contact: events@embl.de



Rose Muthoni Gathungu, Prasad Phapale. Selextion DMS and 6500+ QTrap Mass Spectrometer (Sciex) Metabolomics Facility

Industry programmes

EMBL Corporate Partnership Programme (CPP)

The CPP is EMBL's platform for developing long-term relationships with industry partners.

- Take part by introducing your company and industry contacts to the EMBL CPP
- Extend EMBL's impact on the future of science by helping young scientists to access training and resources
- Support the facilitation of forward-thinking, mutually beneficial scientific exchange and training collaborations between EMBL and industry

Contact: embl-corporate-partnerships@embl.org

EMBL-EBI Industry Programme

A subscription-based offering for major companies that make significant use of the data resources and services provided by EMBL-EBI as a core part of their R&D.

- Member companies represent primarily the pharmaceutical sector
- As a member, benefit from regular quarterly strategy meetings, webinars, and expert-level workshops on topics chosen by members
- Initiate partnerships by introducing your company to EMBL-EBI

Contact: industry@ebi.ac.uk



EMBL Corporate Partnership Programme dinner



Robot avatars join EMBL-EBI training programmes, allowing remote participation.

Resources where you are

EMBL-EBI online bioinformatics resources

Train online is a freely available, open access e-learning resource created by EMBL-EBI trainers.

- Get an overview and take tutorials to make the most of EMBL-EBI's valuable databases and tools
- Access conceptual courses on bioinformatics-related topics, recorded webinars, and video-based courses

Contact: trainonline@ebi.ac.uk

EMBL-EBI bespoke off-site workshops

- Host hands-on workshops at your institute
- Offer your colleagues a range of modules to suit your needs, using examples relevant to your research
- Attend expert-led sessions covering EMBL-EBI's unique data resources

Contact: roadshows@ebi.ac.uk

Research, training, and careers at EMBL

Work at EMBL

EMBL offers a highly collaborative and uniquely international culture. Top quality, interdisciplinary research is supported by access to core facilities and fostered by a vibrant environment consisting of young independent research groups with outstanding graduate students and postdoctoral fellows. EMBL is committed to diversity and equality, and our researchers are assisted by skilled support staff and administration and communication professionals.

Visit: embl.org/jobs

Predocutorial opportunities

The EMBL International PhD Programme, established in 1983, is emblematic of EMBL's commitment to first-class training and education. Scientific excellence, dedicated mentoring, and early independence in research characterise our prestigious programme.

Visit: embl.org/training

Postdoctoral opportunities

EMBL has a dynamic research community of more than 1 000 scientists, of whom one-fifth are postdoctoral fellows based at the six EMBL sites. They are provided with the training, mentoring, and career development support needed to enable them to successfully progress – and excel – in their careers.

Visit: embl.org/training

Group leader opportunities

EMBL appoints group leaders from early in their career and provides a supportive environment for scientists in their first independent position, enabling them to achieve their research goals. Initial management training – the 'Lead your Lab' course – is provided to all new group leaders.

Visit: embl.org/gl_fa

European Learning Laboratory for the Life Sciences (ELLS)

ELLS helps bridge the gap between your research and schools in EMBL member states.*

- Offer your scientific expertise in ELLS educational courses and activities
- Run science education activities for school students with professional support
- Introduce teacher training at your institution based on the ELLS courses model

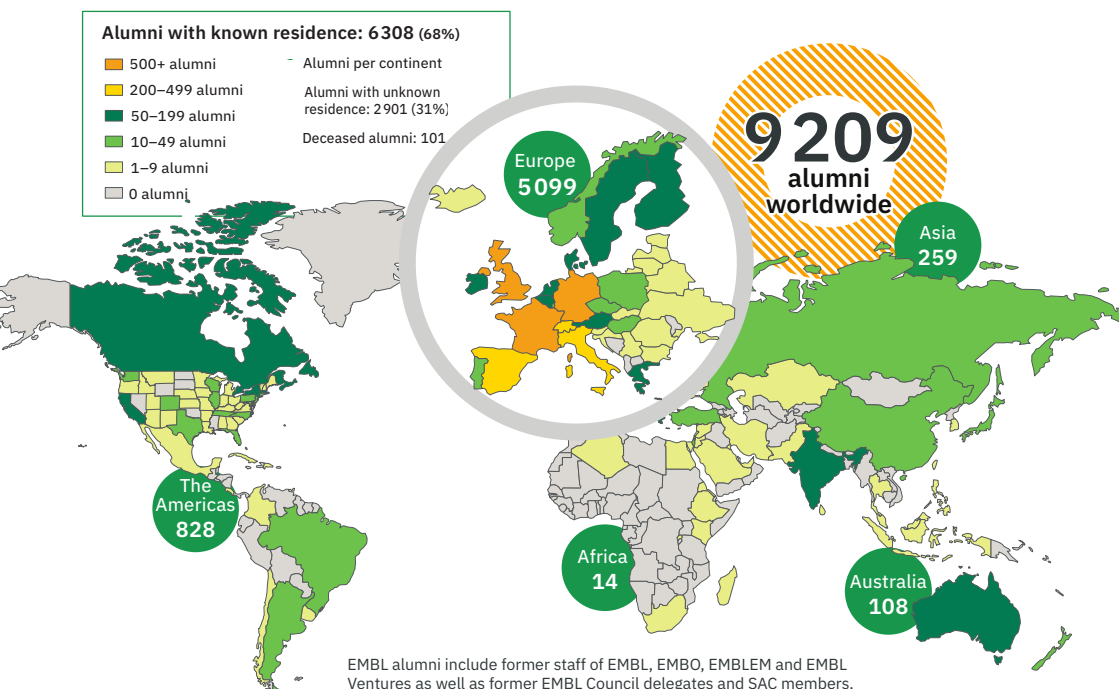
Contact: ells@embl.de

*See map on back page



ELLS Learning Lab

EMBL alumni worldwide



EMBL alumni include former staff of EMBL, EMBO, EMBLEM and EMBL Ventures as well as former EMBL Council delegates and SAC members.

EMBL member states and associate member states

Argentina | Australia | Austria | Belgium | Croatia | Czech Republic | Denmark | Finland | France | Germany | Greece | Hungary | Iceland | Ireland | Israel | Italy | Lithuania | Luxembourg | Malta | Montenegro | Netherlands | Norway | Poland | Portugal | Slovakia | Spain | Sweden | Switzerland | United Kingdom

EMBL prospect member states

Estonia | Latvia

Image credits: Jeff Dowling, Kinga Lubowiecka, Massimo Del Prete, and Marietta Schupp for EMBL. With special thanks to alumni for their photos of events.

Stay in touch with EMBL



@embl.org



embl_org



@embl



@embl

embl.org

Opportunities and benefits for EMBL alumni and staff

Connect with the EMBL community

Find current or former EMBL staff, scientists, or visitors via the EMBL search engine or Alumni Directory and connect – or reconnect – with inspiring individuals who may be able to help you.

- In the search field on www.embl.de, simply type the name of current staff, or any of the following information for former staff: name, institute, city, country
- Scroll down for results, and for the link to the Alumni Directory where you can also search by research topic or expertise

Jobs in EMBL member states

Find jobs near you and share your vacancies.

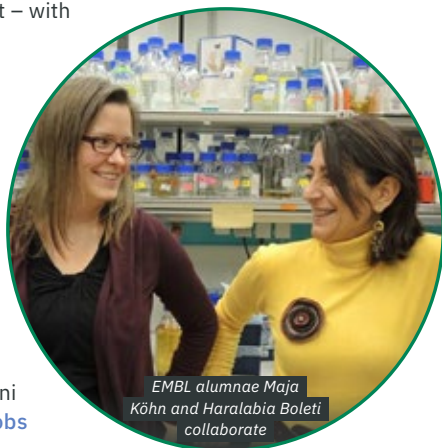
- Search for jobs at the institutes attracting most EMBL alumni in the member states and get inspired: embl.org/alumni/jobs
- Join the EMBL Alumni LinkedIn group to hear about relevant jobs – and support the EMBL community by sharing your own career insights and vacancies: [linkedin.com/groups/140196](https://www.linkedin.com/groups/140196)

EMBL resources and benefits for alumni

Alumni-specific EMBL resources include:

- Core Facility special rates
- Access to PhD application pool
- EMBL lunch cards
- Mailings on EMBL news, events, and career opportunities

Visit: embl.org/alumni/resources



Support us

Make a difference, stay involved, and help strengthen the alumni network.

- Update your details: alumniportal.embl.org
- Share your latest news and achievements
- Mention EMBL in articles about you, your biographies, and social media profiles
- Take on rewarding volunteering roles
- Learn about and support EMBL's Resource Development programme

Visit: embl.org/alumni/makeadifference

Contact: alumni@embl.org

Events in your country and online

The EMBL Alumni Relations team supports alumni in holding events in their countries and online.

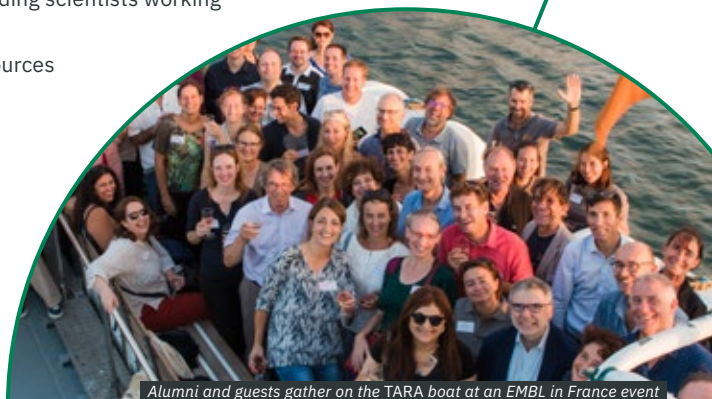
- Network with like-minded people and make new contacts near you
- Enjoy stimulating talks from leading scientists working in research and industry
- Stay up-to-date with EMBL resources and opportunities

Visit: embl.org/alumni/events

Image credits: Jeff Dowling, Kinga Lubowiecka, Massimo Del Prete, and Marietta Schupp for EMBL. With special thanks to alumni for their photos of events.



EMBL team run



Alumni and guests gather on the TARA boat at an EMBL in France event

Stay in touch with EMBL



@embl.org



embl_org



@embl



@embl

embl.org